



7 The Drive, Bristol, BS14 9JB

£415,000

We are delighted to present an immaculate semi-detached house for sale, that effortlessly captures both modernity and period charm. Nestled in a quiet, family-friendly cul de sac, this property boasts three bedrooms and a well appointed bathroom with a walk in rain shower feature to deliver an opulent bathing experience.

The heart of this home lies in its striking open-plan kitchen / diner / family room. Fully extended, you can immerse yourself in an atmosphere of interaction and light, courtesy of the bifold doors that open straight onto the garden. The layout, which includes a kitchen island and dedicated dining space, promises a fluid dynamic for busy families — allowing more family moments to be created and savoured.

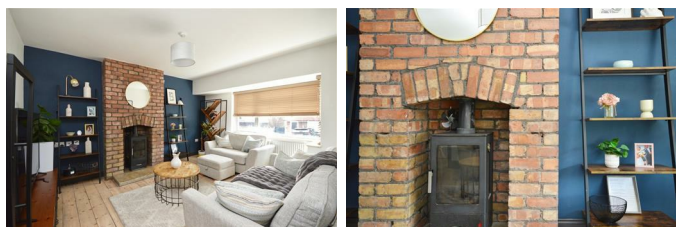
Bedroom 1 and 2 offer spacious double accommodations each linked to a shared, walk-in wardrobe - a Jack and Jill style rarity. The third bedroom, slightly smaller but no less welcoming, offers a perfectly cosy space for a single occupant although will fit a double bed.

Entrance Hall



Sitting Room

15'1" x 11'2" (4.60 x 3.41)



Open Plan Kitchen / Diner / Family Room

22'4" x 17'4" (6.83 x 5.29)



First Floor Landing

Bedroom One

13'3" x 10'5" (4.04 x 3.18)



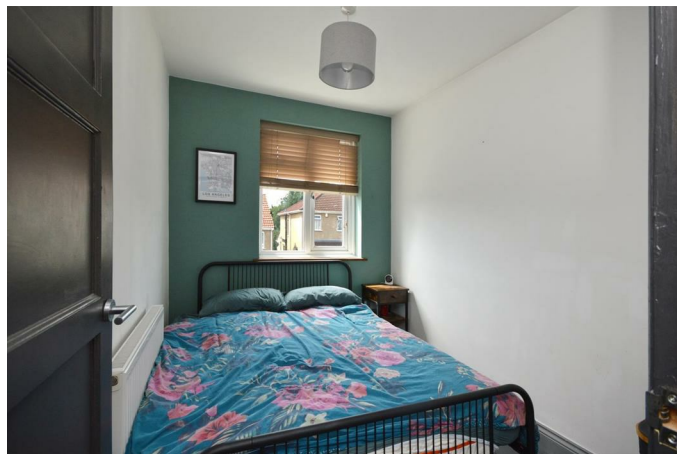
Bedroom Two

10'5" x 9'7" (3.18 x 2.94)



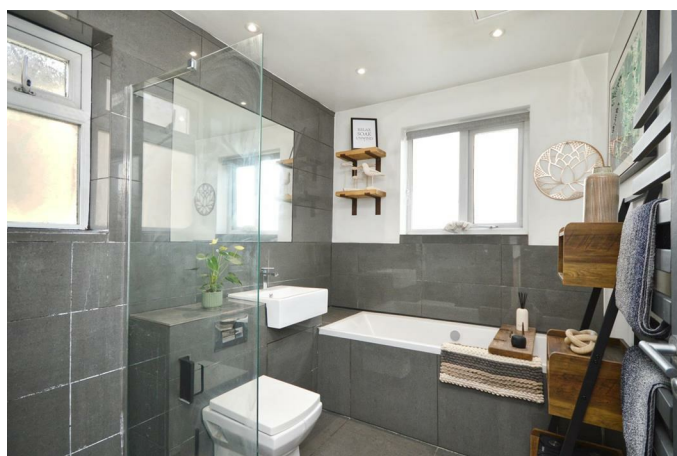
Bedroom Three

9'1" x 6'11" (2.78 x 2.12)



Bathroom

8'6" x 6'11" (2.60 x 2.13)



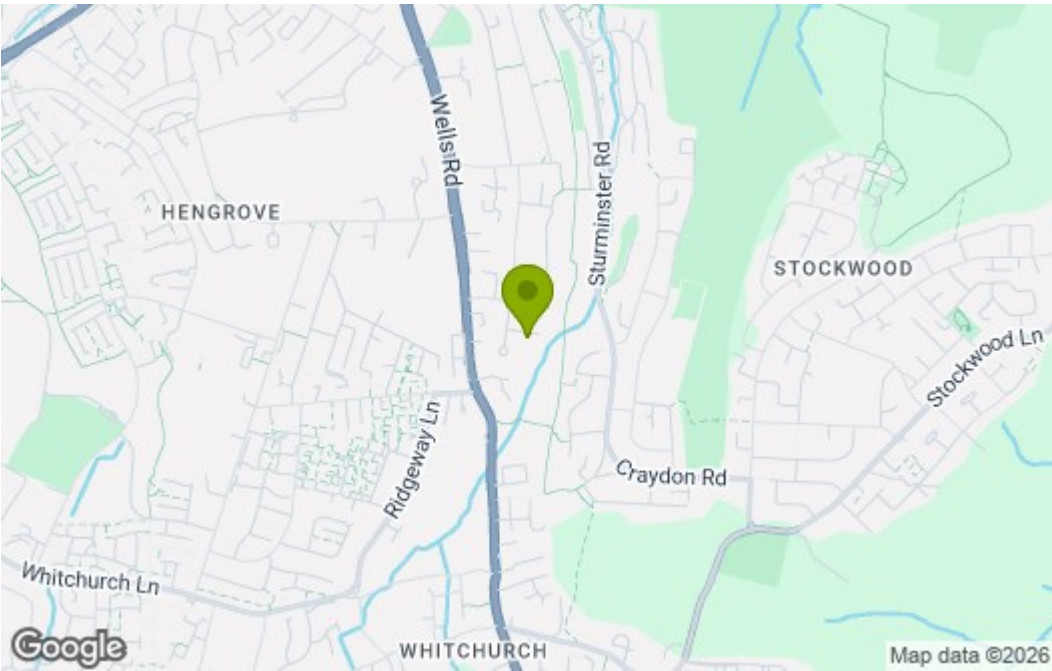
Outside



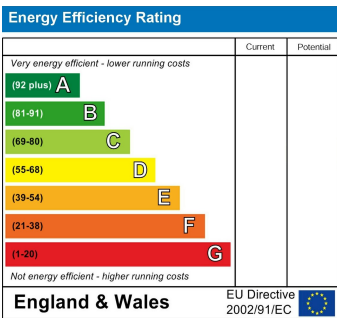
Floor Plan



Area Map



Energy Efficiency Graph



These particulars, whilst believed to be accurate are set out as a general outline only for guidance and do not constitute any part of an offer or contract. Intending purchasers should not rely on them as statements of representation of fact, but must satisfy themselves by inspection or otherwise as to their accuracy. No person in this firms employment has the authority to make or give any representation or warranty in respect of the property.